

Bauwerk 01 (BW 6108 501)
 Verlängerung des überschütteten Durchlassbauwerkes für den Morbach im Zuge des planfreien Knotenpunktsausbau

Bau-km 1+498
Bau-km (Ausfädelungspur) 0+110
Bau-km (Einfädelungspur) 0+359
 KrW = 90,00 gon LW = 2,00 m
 BzG = LH = 1,45 m
 MLC = 50/50 - 100 KH = 0,40 - 0,70 m

Achse 302 - B 327 "Einfädelungstreifen"

H = 1000.000 m
 T = 3560 m
 f = 0.006 m
 km 0+433.183
 h TS = 420.832 m

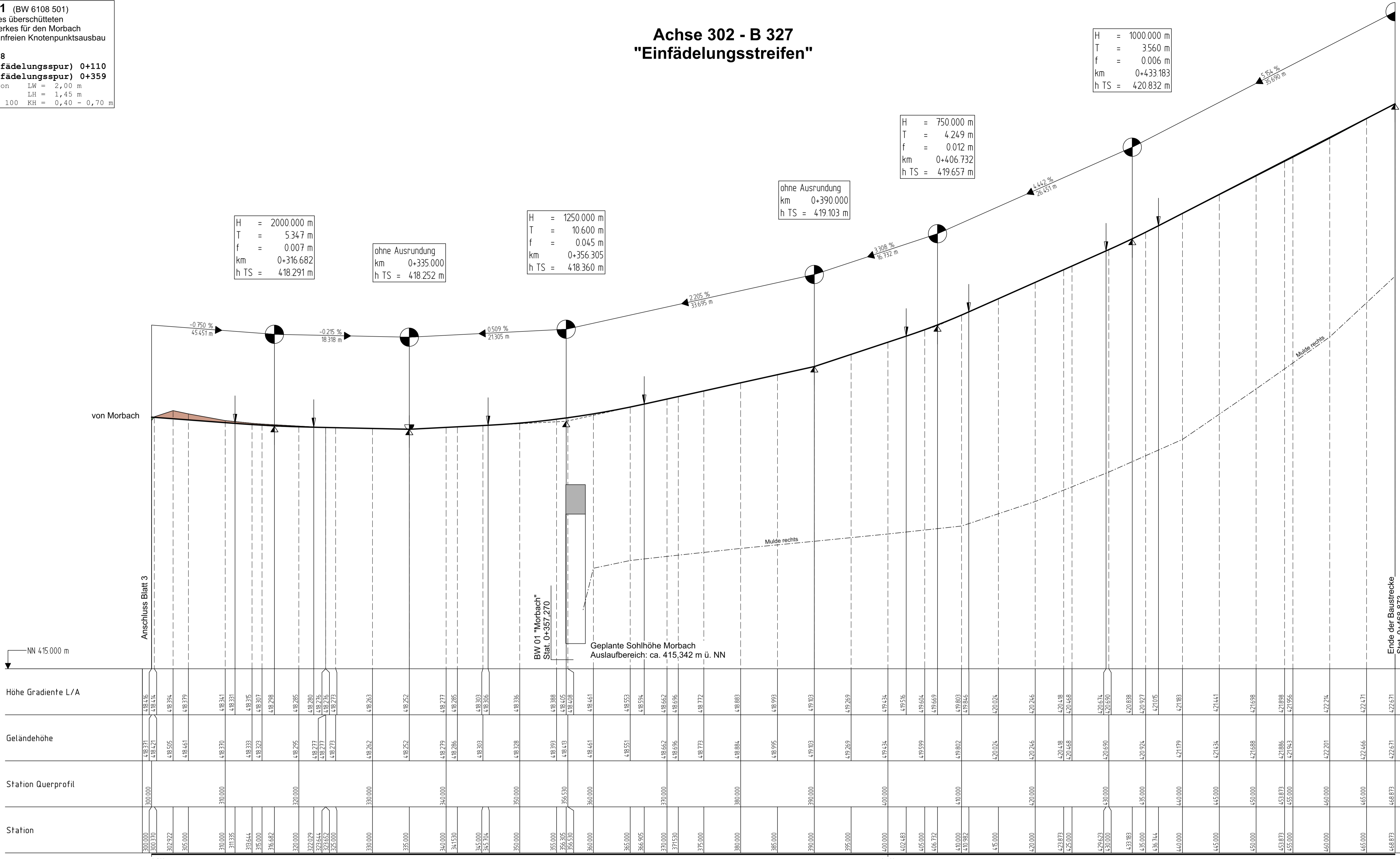
H = 750.000 m
 T = 4.249 m
 f = 0.012 m
 km 0+406.732
 h TS = 419.657 m

ohne Ausrundung
 km 0+390.000
 h TS = 419.103 m

H = 1250.000 m
 T = 10.600 m
 f = 0.045 m
 km 0+356.305
 h TS = 418.360 m

ohne Ausrundung
 km 0+335.000
 h TS = 418.252 m

H = 2000.000 m
 T = 5.347 m
 f = 0.007 m
 km 0+316.682
 h TS = 418.291 m



Station	Höhe	Station	Höhe	Station	Höhe	Station	Höhe
300.000	418.146	310.000	418.311	320.000	418.295	330.000	418.263
300.370	418.144	310.335	418.315	320.370	418.277	330.335	418.263
300.740	418.144	310.700	418.315	320.740	418.277	330.700	418.263
301.110	418.144	311.065	418.315	321.110	418.277	331.065	418.263
301.480	418.144	311.430	418.315	321.480	418.277	331.430	418.263
301.850	418.144	311.795	418.315	321.850	418.277	331.795	418.263
302.220	418.144	312.160	418.315	322.220	418.277	332.160	418.263
302.590	418.144	312.525	418.315	322.590	418.277	332.525	418.263
302.960	418.144	312.890	418.315	322.960	418.277	332.890	418.263
303.330	418.144	313.255	418.315	323.330	418.277	333.255	418.263
303.700	418.144	313.620	418.315	323.700	418.277	333.620	418.263
304.070	418.144	313.985	418.315	324.070	418.277	333.985	418.263
304.440	418.144	314.350	418.315	324.440	418.277	334.350	418.263
304.810	418.144	314.715	418.315	324.810	418.277	334.715	418.263
305.180	418.144	315.080	418.315	325.180	418.277	335.080	418.263
305.550	418.144	315.445	418.315	325.550	418.277	335.445	418.263
305.920	418.144	315.810	418.315	325.920	418.277	335.810	418.263
306.290	418.144	316.175	418.315	326.290	418.277	336.175	418.263
306.660	418.144	316.540	418.315	326.660	418.277	336.540	418.263
307.030	418.144	316.905	418.315	327.030	418.277	336.905	418.263
307.400	418.144	317.270	418.315	327.400	418.277	337.270	418.263
307.770	418.144	317.635	418.315	327.770	418.277	337.635	418.263
308.140	418.144	318.000	418.315	328.140	418.277	338.000	418.263
308.510	418.144	318.365	418.315	328.510	418.277	338.365	418.263
308.880	418.144	318.730	418.315	328.880	418.277	338.730	418.263
309.250	418.144	319.095	418.315	329.250	418.277	339.095	418.263
309.620	418.144	319.460	418.315	329.620	418.277	339.460	418.263
310.000	418.144	319.825	418.315	330.000	418.277	340.000	418.263
310.370	418.144	320.190	418.315	330.370	418.277	340.370	418.263
310.740	418.144	320.555	418.315	330.740	418.277	340.740	418.263
311.110	418.144	320.920	418.315	331.110	418.277	341.110	418.263
311.480	418.144	321.285	418.315	331.480	418.277	341.480	418.263
311.850	418.144	321.650	418.315	331.850	418.277	341.850	418.263
312.220	418.144	322.015	418.315	332.220	418.277	342.220	418.263
312.590	418.144	322.380	418.315	332.590	418.277	342.590	418.263
312.960	418.144	322.745	418.315	332.960	418.277	342.960	418.263
313.330	418.144	323.110	418.315	333.330	418.277	343.330	418.263
313.700	418.144	323.475	418.315	333.700	418.277	343.700	418.263
314.070	418.144	323.840	418.315	334.070	418.277	344.070	418.263
314.440	418.144	324.205	418.315	334.440	418.277	344.440	418.263
314.810	418.144	324.570	418.315	334.810	418.277	344.810	418.263
315.180	418.144	324.935	418.315	335.180	418.277	345.180	418.263
315.550	418.144	325.300	418.315	335.550	418.277	345.550	418.263
315.920	418.144	325.665	418.315	335.920	418.277	345.920	418.263
316.290	418.144	326.030	418.315	336.290	418.277	346.290	418.263
316.660	418.144	326.395	418.315	336.660	418.277	346.660	418.263
317.030	418.144	326.760	418.315	337.030	418.277	347.030	418.263
317.400	418.144	327.125	418.315	337.400	418.277	347.400	418.263
317.770	418.144	327.490	418.315	337.770	418.277	347.770	418.263
318.140	418.144	327.855	418.315	338.140	418.277	348.140	418.263
318.510	418.144	328.220	418.315	338.510	418.277	348.510	418.263
318.880	418.144	328.585	418.315	338.880	418.277	348.880	418.263
319.250	418.144	328.950	418.315	339.250	418.277	349.250	418.263
319.620	418.144	329.315	418.315	339.620	418.277	349.620	418.263
320.000	418.144	329.680	418.315	340.000	418.277	350.000	418.263
320.370	418.144	330.045	418.315	340.370	418.277	350.370	418.263
320.740	418.144	330.410	418.315	340.740	418.277	350.740	418.263
321.110	418.144	330.775	418.315	341.110	418.277	351.110	418.263
321.480	418.144	331.140	418.315	341.480	418.277	351.480	418.263
321.850	418.144	331.505	418.315	341.850	418.277	351.850	418.263
322.220	418.144	331.870	418.315	342.220	418.277	352.220	418.263
322.590	418.144	332.235	418.315	342.590	418.277	352.590	418.263
322.960	418.144	332.600	418.315	342.960	418.277	352.960	418.263
323.330	418.144	332.965	418.315	343.330	418.277	353.330	418.263
323.700	418.144	333.330	418.315	343.700	418.277	353.700	418.263
324.070	418.144	333.695	418.315	344.070	418.277	354.070	418.263
324.440	418.144	334.060	418.315	344.440	418.277	354.440	418.263
324.810	418.144	334.425	418.315	344.810	418.277	354.810	418.263
325.180	418.144	334.790	418.315	345.180	418.277	355.180	418.263
325.550	418.144	335.155	418.315	345.550	418.277	355.550	418.263
325.920	418.144	335.520	418.315	345.920	418.277	355.920	418.263
326.290	418.144	335.885	418.315	346.290	418.277	356.290	418.263
326.660	418.144	336.250	418.315	346.660	418.277	356.660	418.263
327.030	418.144	336.615	418.315	347.030	418.277	357.030	418.263
327.400	418.144	336.980	418.315	347.400	418.277	357.400	418.263
327.770	418.144	337.345	418.315	347.770	418.277	357.770	418.263
328.140	418.144	337.710	418.315	348.140	418.277	358.140	418.263
328.510	418.144	338.075	418.315	348.510	418.277	358.510	418.263
328.880	418.144	338.440	418.315	348.880	418.277	358.880	418.263
329.250	418.144	338.805	418.315	349.250	418.277	359.250	418.263
329.620	418.144	339.170	418.315	349.620	418.277	359.620	418.263
330.000	418.144	339.535	418.315	350.000	418.277	360.000	418.263
330.370	418.144	339.900	418.315	350.370	418.277	360.370	418.263
330.740	418.144	340.265	418.315	350.740	418.277	360.740	418.263
331.110	418.144	340.630	418.315	351.110	418.277	361.110	418.263
331.480	418.144	340.995	418.315	351.480	418.277	361.480	418.263
331.850	418.144	341.360	418.315	351.850	418.277	361.850	418.263
332.220	418.144	341.725	418.315	352.220	418.277	362.220	418.263
332.590	418.144	342.090	418.315	352.590	418.277	362.590	418.263
332.960	418.144	342.455	418.315	352.960	418.277	362.960	418.263
333.330	418.144	342.820	418.315	353.330	418.277	363.330	418.263
333.700	418.144	343.185	418.315	353.700	418.277	363.700	418.263
334.070	418.144	343.550	418.315	354.070	418.277	364.070	418.263
334.440	418.144	343.915	418.315	354.440	418.277	364.440	418.263
334.810	418.144	344.280	418.315	354.810	418.277	364.810	418.263
335.180	418.144	344.645	418.315	355.180	418.277	365.180	418.263
335.550	418.144	345.010	418.315	355.550	418.277	365.550	418.263
335.920	418.144	345.375	418.315	355.920	418.277	365.920	418.263
336.290	418.144	345.740	418.315	356.290	418.277	366.290	418.263
336.660	418.144	346.105	418.315	356.660	418.277	366.660	418.263
337.030	418.144	346.470	418.315	357.030	418.277	367.030	418.263
337.400	418.144	346.835	418.315	357.400	418.277	367.400	418.263
337.770	418.144	347.200	418.315	357.770	418.277	367.770	418.263
338.140	418.144	347.565	418.315	358.140	418.277	368.140	418.263
338.510	418.144	347.930	418.315	358.510	418.277	368.510	418.263
338.880	418.144	348.295	418.315	358.880	418.277	368.880	418.263
339.250	418.144	348.660	418.315	359.250	418.277	369.250	418.263
339.620	418.144	349.025	418.315	359.620	4		