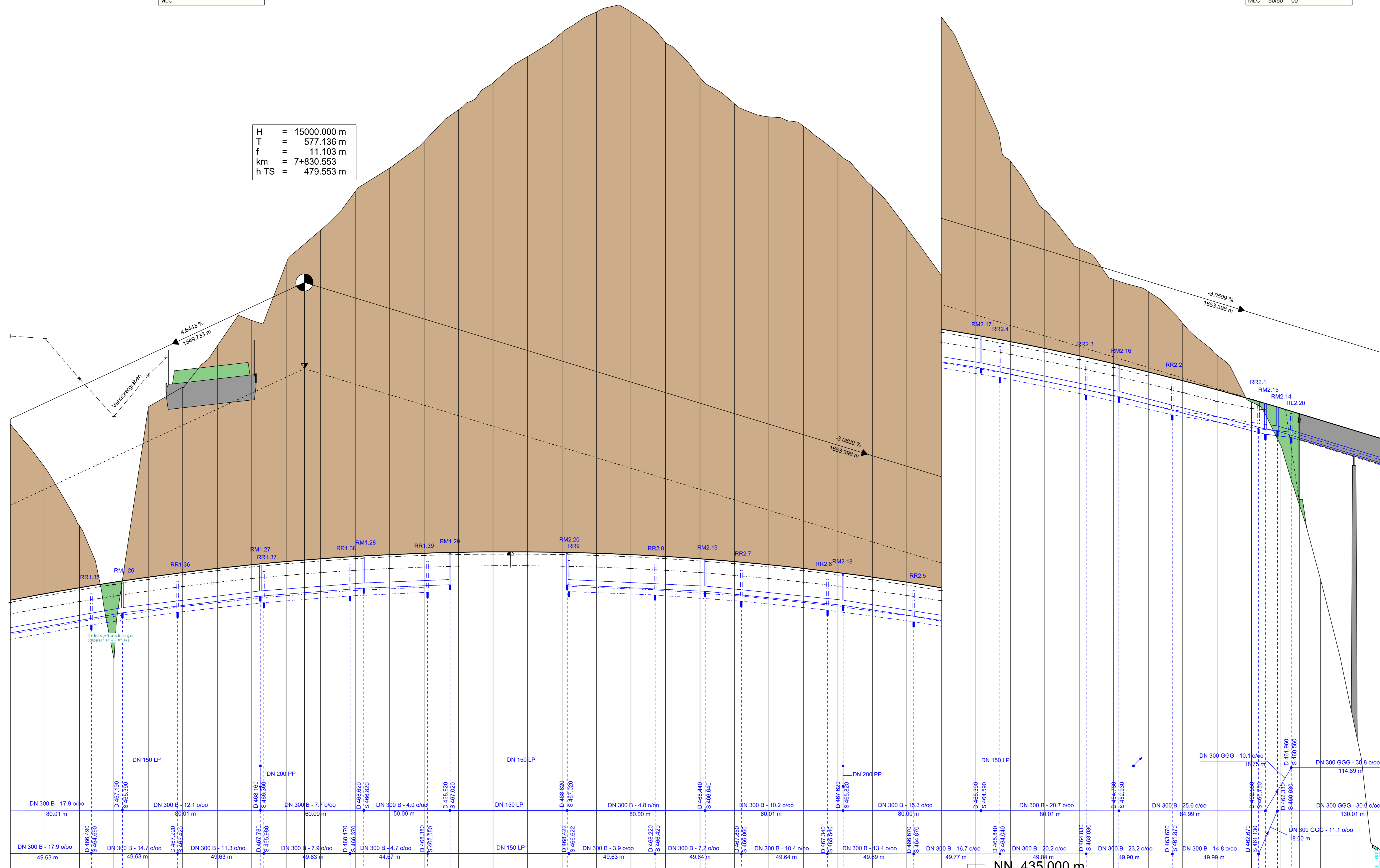


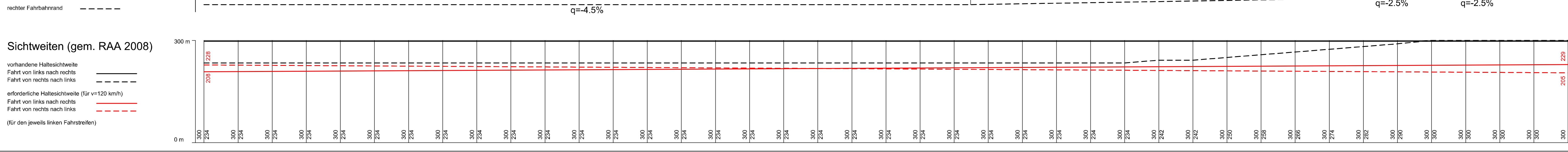
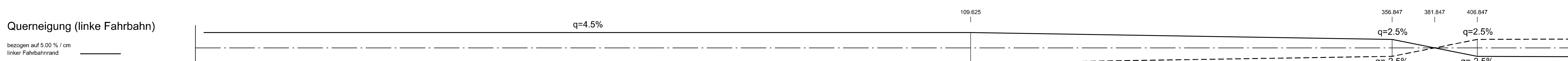
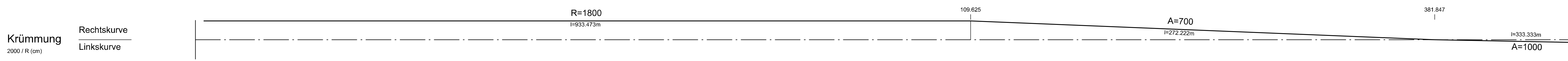
Bauwerk 06
Grünbrücke
Grünbrücke über die A 1
Bau-km 7+776.500
KW = 100.000 qm LW = 40,00 m
RSZ = 32,00 m LH = 4,70 m
MLC = ...

Bauwerk 07A
Talbrücke Hollerseifen
Talbrücke im Zuge der A 1
über den Hollerseifen
Bau-km 8+407.500 - 8+514.500
KW = ... qm LW = 107,00 m
RSZ = 30,60 m LH = 24,30 m
MLC = 50/50 - 100

H = 15000,000 m
T = 577,136 m
f = 11,103 m
km = 7+830,553
h TS = 479,553 m



Höhe	450.000	449.319	448.629	447.939	447.249	446.559	445.869	445.179	444.489	443.799	443.109	442.419	441.729	441.039	440.349	439.659	438.969	438.279	437.589	436.899	436.209	435.519	434.829	434.139	433.449	432.759	432.069	431.379	430.689	429.999	429.309	428.619	427.929	427.239	426.549	425.859	425.169	424.479	423.789	423.099	422.409	421.719	421.029	420.339	419.649	418.959	418.269	417.579	416.889	416.199	415.509	414.819	414.129	413.439	412.749	412.059	411.369	410.679	409.989	409.299	408.609	407.919	407.229	406.539	405.849	405.159	404.469	403.779	403.089	402.399	401.709	401.019	400.329	399.639	398.949	398.259	397.569	396.879	396.189	395.499	394.809	394.119	393.429	392.739	392.049	391.359	390.669	389.979	389.289	388.599	387.909	387.219	386.529	385.839	385.149	384.459	383.769	383.079	382.389	381.699	381.009	380.319	379.629	378.939	378.249	377.559	376.869	376.179	375.489	374.799	374.109	373.419	372.729	372.039	371.349	370.659	369.969	369.279	368.589	367.899	367.209	366.519	365.829	365.139	364.449	363.759	363.069	362.379	361.689	360.999	360.309	359.619	358.929	358.239	357.549	356.859	356.169	355.479	354.789	354.099	353.409	352.719	352.029	351.339	350.649	349.959	349.269	348.579	347.889	347.199	346.509	345.819	345.129	344.439	343.749	343.059	342.369	341.679	340.989	340.299	339.609	338.919	338.229	337.539	336.849	336.159	335.469	334.779	334.089	333.399	332.709	332.019	331.329	330.639	329.949	329.259	328.569	327.879	327.189	326.499	325.809	325.119	324.429	323.739	323.049	322.359	321.669	320.979	320.289	319.599	318.909	318.219	317.529	316.839	316.149	315.459	314.769	314.079	313.389	312.699	312.009	311.319	310.629	309.939	309.249	308.559	307.869	307.179	306.489	305.799	305.109	304.419	303.729	303.039	302.349	301.659	300.969	300.279	299.589	298.899	298.209	297.519	296.829	296.139	295.449	294.759	294.069	293.379	292.689	291.999	291.309	290.619	289.929	289.239	288.549	287.859	287.169	286.479	285.789	285.099	284.409	283.719	283.029	282.339	281.649	280.959	280.269	279.579	278.889	278.199	277.509	276.819	276.129	275.439	274.749	274.059	273.369	272.679	271.989	271.299	270.609	269.919	269.229	268.539	267.849	267.159	266.469	265.779	265.089	264.399	263.709	263.019	262.329	261.639	260.949	260.259	259.569	258.879	258.189	257.499	256.809	256.119	255.429	254.739	254.049	253.359	252.669	251.979	251.289	250.599	249.909	249.219	248.529	247.839	247.149	246.459	245.769	245.079	244.389	243.699	243.009	242.319	241.629	240.939	240.249	239.559	238.869	238.179	237.489	236.799	236.109	235.419	234.729	234.039	233.349	232.659	231.969	231.279	230.589	229.899	229.209	228.519	227.829	227.139	226.449	225.759	225.069	224.379	223.689	222.999	222.309	221.619	220.929	220.239	219.549	218.859	218.169	217.479	216.789	216.099	215.409	214.719	214.029	213.339	212.649	211.959	211.269	210.579	209.889	209.199	208.509	207.819	207.129	206.439	205.749	205.059	204.369	203.679	202.989	202.299	201.609	200.919	200.229	199.539	198.849	198.159	197.469	196.779	196.089	195.399	194.709	194.019	193.329	192.639	191.949	191.259	190.569	189.879	189.189	188.499	187.809	187.119	186.429	185.739	185.049	184.359	183.669	182.979	182.289	181.599	180.909	180.219	179.529	178.839	178.149	177.459	176.769	176.079	175.389	174.699	174.009	173.319	172.629	171.939	171.249	170.559	169.869	169.179	168.489	167.799	167.109	166.419	165.729	165.039	164.349	163.659	162.969	162.279	161.589	160.899	160.209	159.519	158.829	158.139	157.449	156.759	156.069	155.379	154.689	153.999	153.309	152.619	151.929	151.239	150.549	149.859	149.169	148.479	147.789	147.099	146.409	145.719	145.029	144.339	143.649	142.959	142.269	141.579	140.889	140.199	139.509	138.819	138.129	137.439	136.749	136.059	135.369	134.679	133.989	133.299	132.609	131.919	131.229	130.539	129.849	129.159	128.469	127.779	127.089	126.399	125.709	125.019	124.329	123.639	122.949	122.259	121.569	120.879	120.189	119.499	118.809	118.119	117.429	116.739	116.049	115.359	114.669	113.979	113.289	112.599	111.909	111.219	110.529	109.839	109.149	108.459	107.769	107.079	106.389	105.699	105.009	104.319	103.629	102.939	102.249	101.559	100.869	100.179	99.489	98.799	98.109	97.419	96.729	96.039	95.349	94.659	93.969	93.279	92.589	91.899	91.209	90.519	89.829	89.139	88.449	87.759	87.069	86.379	85.689	84.999	84.309	83.619	82.929	82.239	81.549	80.859	80.169	79.479	78.789	78.099	77.409	76.719	76.029	75.339	74.649	73.959	73.269	72.579	71.889	71.199	70.509	69.819	69.129	68.439	67.749	67.059	66.369	65.679	64.989	64.299	63.609	62.919	62.229	61.539	60.849	60.159	59.469	58.779	58.089	57.399	56.709	56.019	55.329	54.639	53.949	53.259	52.569	51.879	51.189	50.499	49.809	49.119	48.429	47.739	47.049	46.359	45.669	44.979	44.289	43.599	42.909	42.219	41.529	40.839	40.149	39.459	38.769	38.079	37.389	36.699	36.009	35.319	34.629	33.939	33.249	32.559	31.869	31.179	30.489	29.799	29.109	28.419	27.729	27.039	26.349	25.659	24.969	24.279	23.589	22.899	22.209	21.519	20.829	20.139	19.449	18.759	18.069	17.379	16.689	15.999	15.309	14.619	13.929	13.239	12.549	11.859	11.169	10.479	9.789	9.099	8.409	7.719	7.029	6.339	5.649	4.959	4.269	3.579	2.889	2.199	1.509	0.819	0.129
Station	7+700	7+800	7+900	8+000	8+100	8+200	8+300	8+400																																																																																																																																																																																																																																																																																																																																																																																																																																																																																																																																																																																																																																																																					



Zeichenerklärung

- Gradientenhochpunkt
- Gradienten Tiefpunkt
- Ausrundungsbeginn Kruppe / Ausrundungsende Wanne
- Tangentenschnittpunkt
- Damm
- Einschnitt
- Graben / Mulde links
- Graben / Mulde rechts
- Schacht links
- Schacht mitte
- Schacht rechts
- Schacht mitte und rechts

Neigungsbrechpunkt mit Angabe von:
 T = 302,155 m
 f = 4,372 m
 km = 0+401,335
 hTS = 418,868 m
 Baulin., Höhe Tangentenschnittpunkt

Längsneigung und Abstand zum nächsten Neigungsbrechpunkt

Rohtleitung mit Angabe der Dimension und der Längsneigung

links
 300 300 121 %
 rechts
 300 300 121 %
 mitte
 300 300 121 %

D = Deckhöhe Schacht
 S = Sohlhöhe Schacht
 S_{Ein} = Sohlhöhe Einlauf
 S_{Aus} = Sohlhöhe Auslauf
 E = Einlauf
 A = Auslauf

Durchlass mit Achsen / Ild. Nr. und Durchmesser

c			
b			
a			
Nr.	Art der Änderung		Datum
1	2	3	4
5	6	7	8
9	10	11	12
13	14		

FESTSTELLUNGSENTWURF

Unterlage: 6 Blatt-Nr.: 5

Strassenbauverwaltung:
 Rheinland-Pfalz
 Höhenplan 5
 Bau-km 7+460 - Bau-km 8+460

PROJIS-Nr.: 0768725720 SAP-Nr.: A.71-02-0019.02 Maßstab: 1 : 1.000/100

Neubau der A 1
 AS Kelberg (B 410) - AS Adenau (L 10)
 Bau-km 4+920 bis Bau-km 15+466,325

aufgestellt: Bgm
 Trnr. vom 03.04.2018

Festgestellt
 gemäß Kapitel A Nr. 1 des
 Planfeststellungsbeschlusses vom
 25.07.2012 Az. St 1587/F-Staff 34FF 36
 Landesbetrieb Mobilität
 Rheinland-Pfalz
 Verkehrsministerium

In Vertretung
 Dr. Markus Reider
 des Landesbetrieb Mobilität